

CERTS LAND

CompTIA

220-1002 EXAM

CompTIA A+ Core 2

Thank you for downloading 220-1002 exam PDF Demo

Limited Content Questions and Answers

<https://www.certsland.com/220-1002-dumps/>

www.certsland.com

Version: 27.0

Question: 1

A user has installed two new drives in one of the computers in the computer lab and has been unable to format Disk1 from the command prompt.

The lab requires that Disk1 be a dynamic disk configured with two partitions. The first partition must be 256,000 MB in size and mapped to drive F. The second partition must be 512,000 MB in size and mapped to drive G.

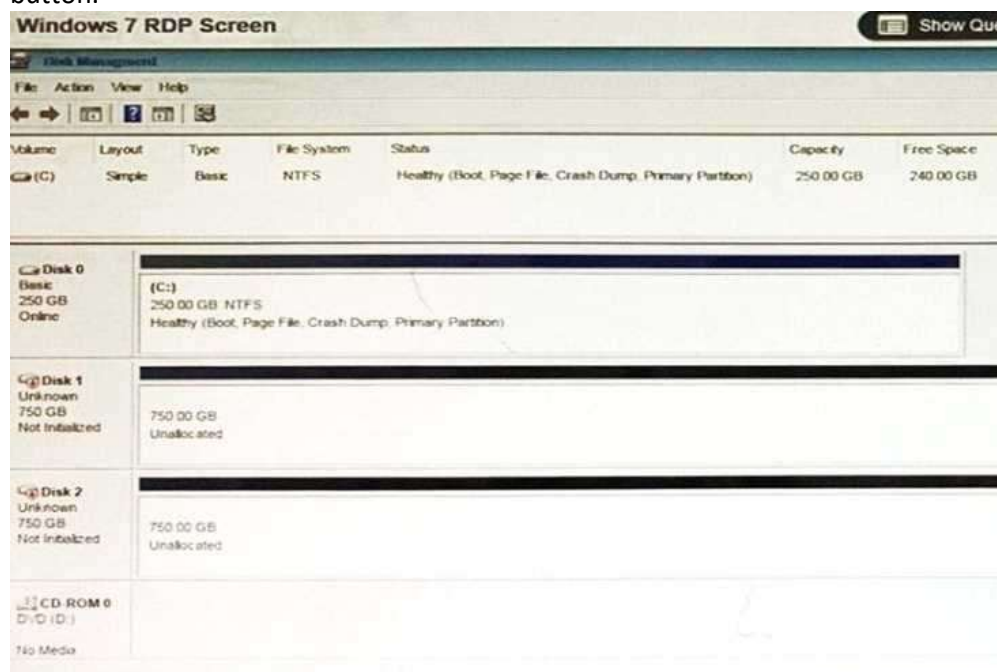
The new partitions must be formatted to ensure that user's files can be secured from other users and that the disk must be configured to account for future redundancy.

Make sure to maintain a consistent file system.

INSTRUCTIONS:

Conduct the necessary steps within the Disk Manager to accomplish these tasks.

If at any time you would like to bring back the initial state of the simulation, please click the Reset All button.



Answer: Please review explanation for detailed answer.

Please review explanation for detailed answer.
Right click on disk 1, click on initialize

Choose disk and option as MBR. Hit ok.

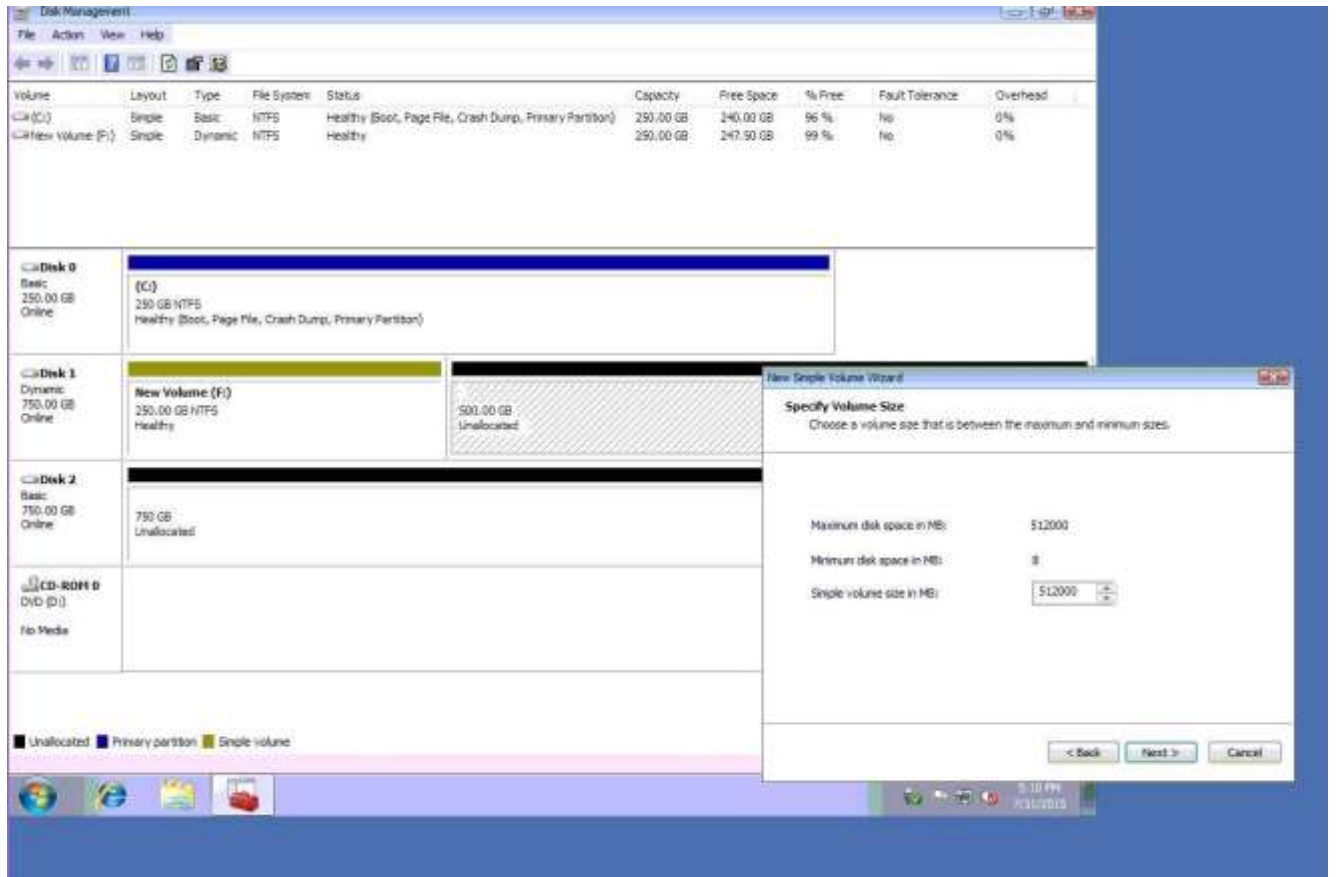
Again, right click on disk 1 and choose convert to dynamic disk.

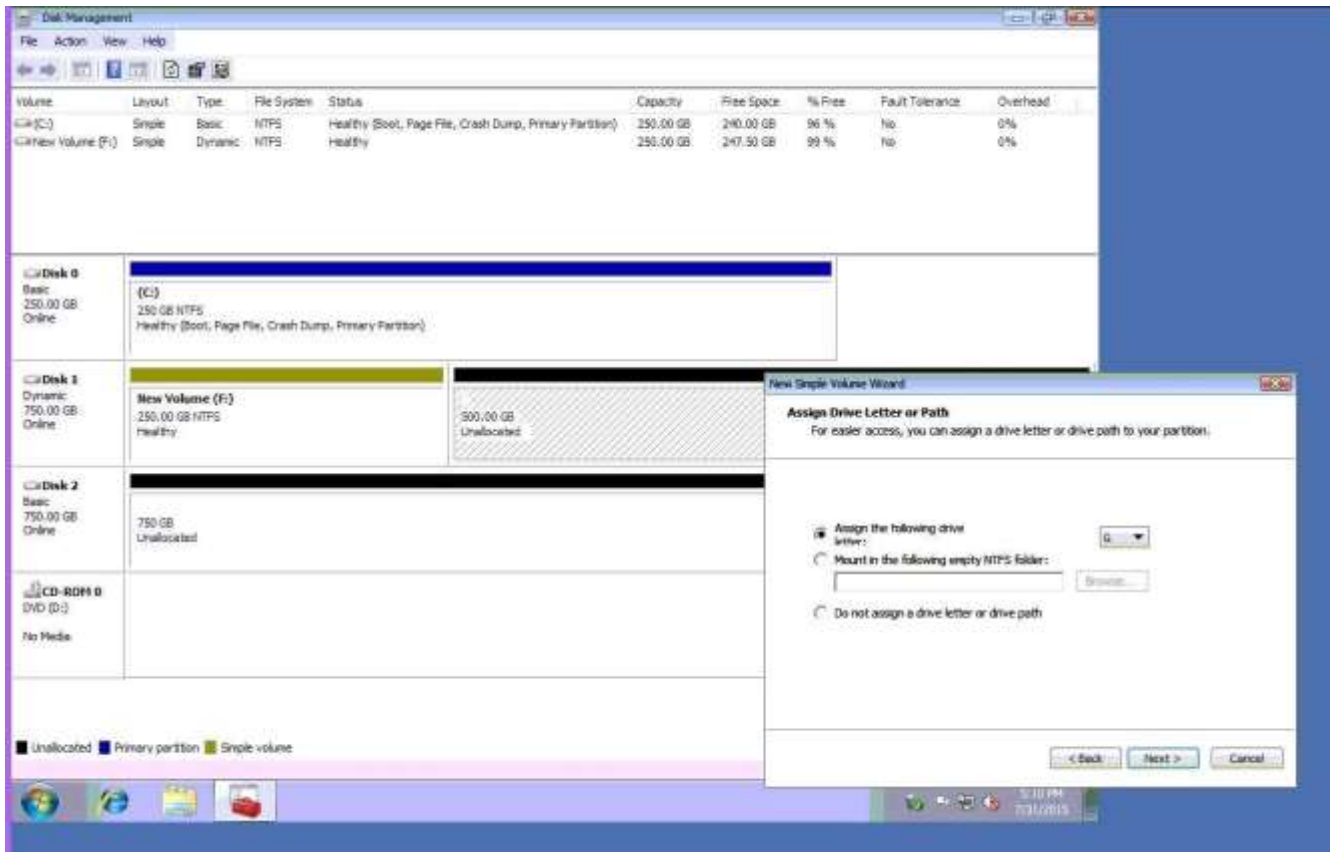
Now right click on disk 1 and choose new simple volume.

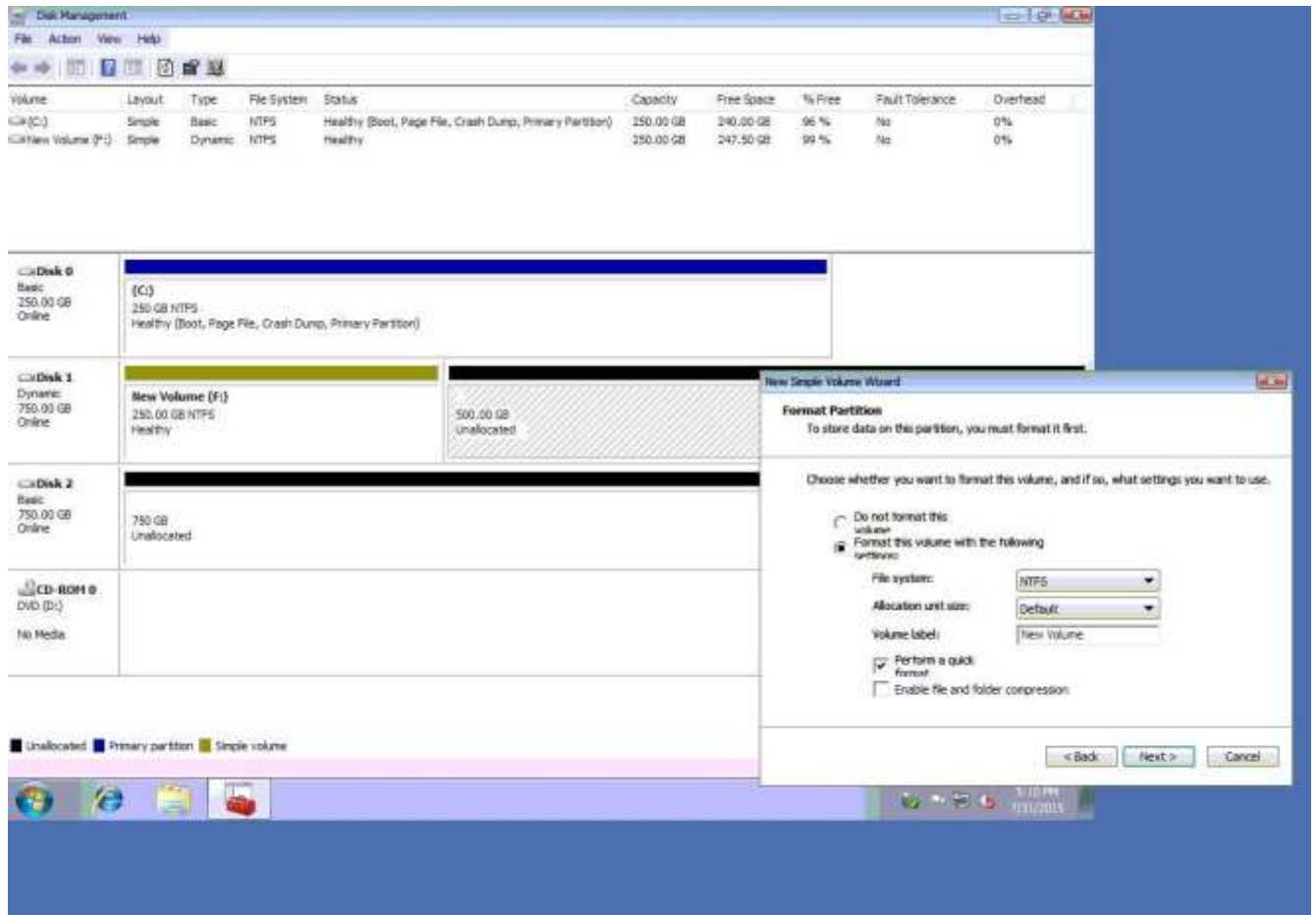
Specify storage as 256000 and assign a drive letter F and choose file system as NTFS and click finish.

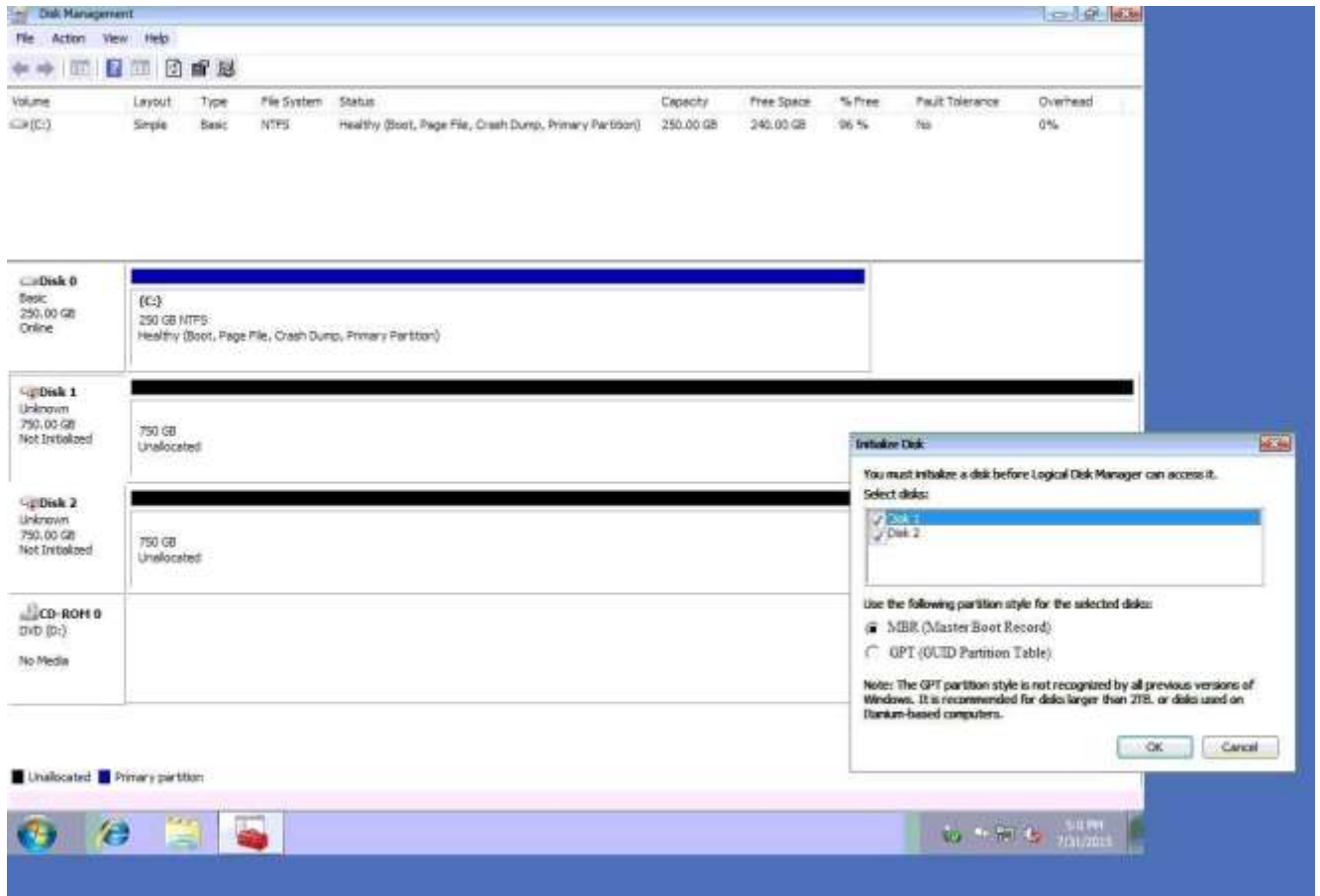
Do the same thing for rest of space of disk 1, assigning 512000MB and using Disc G

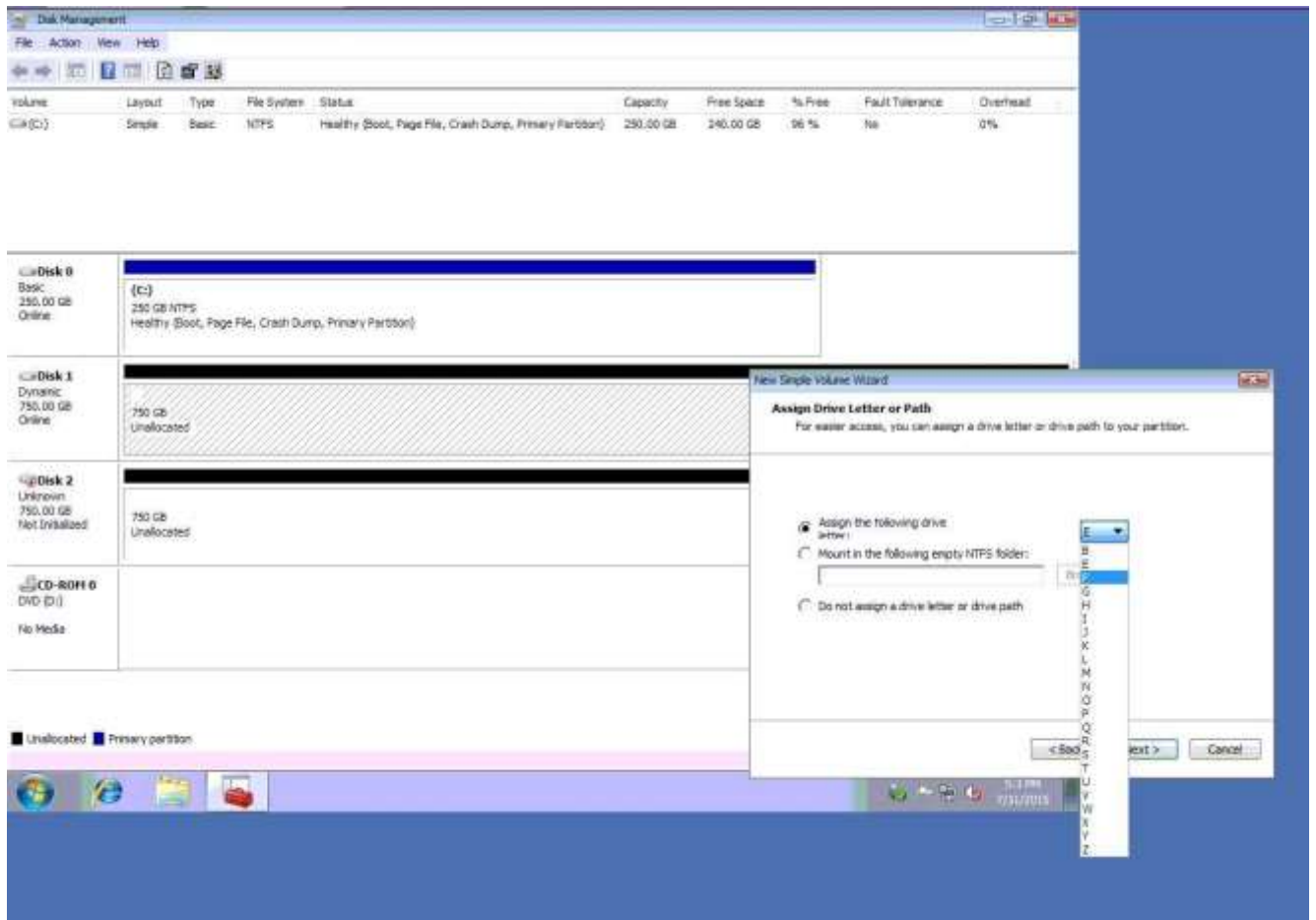
Here are the screen shots showing this process:

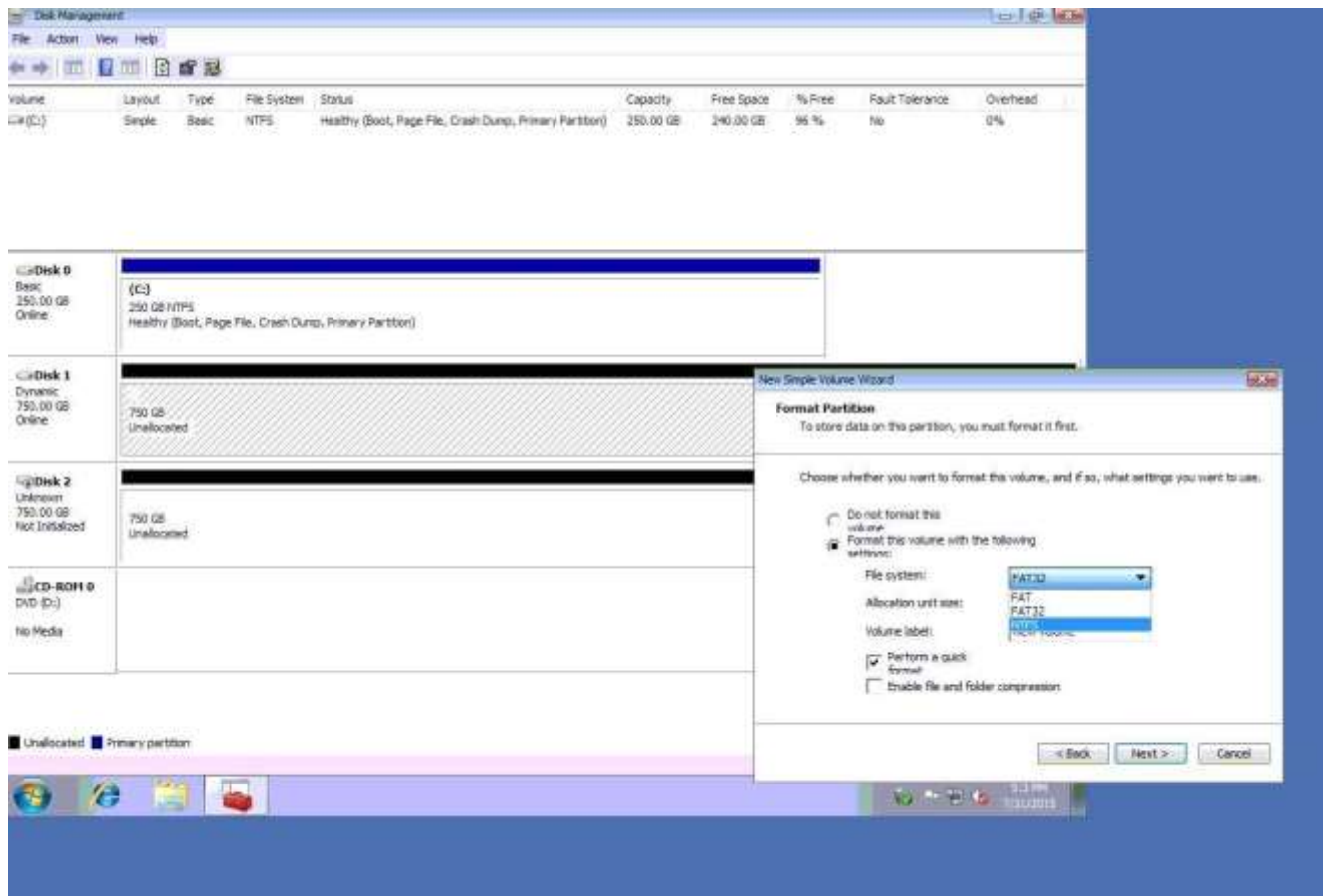












The screenshot shows the Windows Disk Management console. At the top, a table lists the volumes on the system:

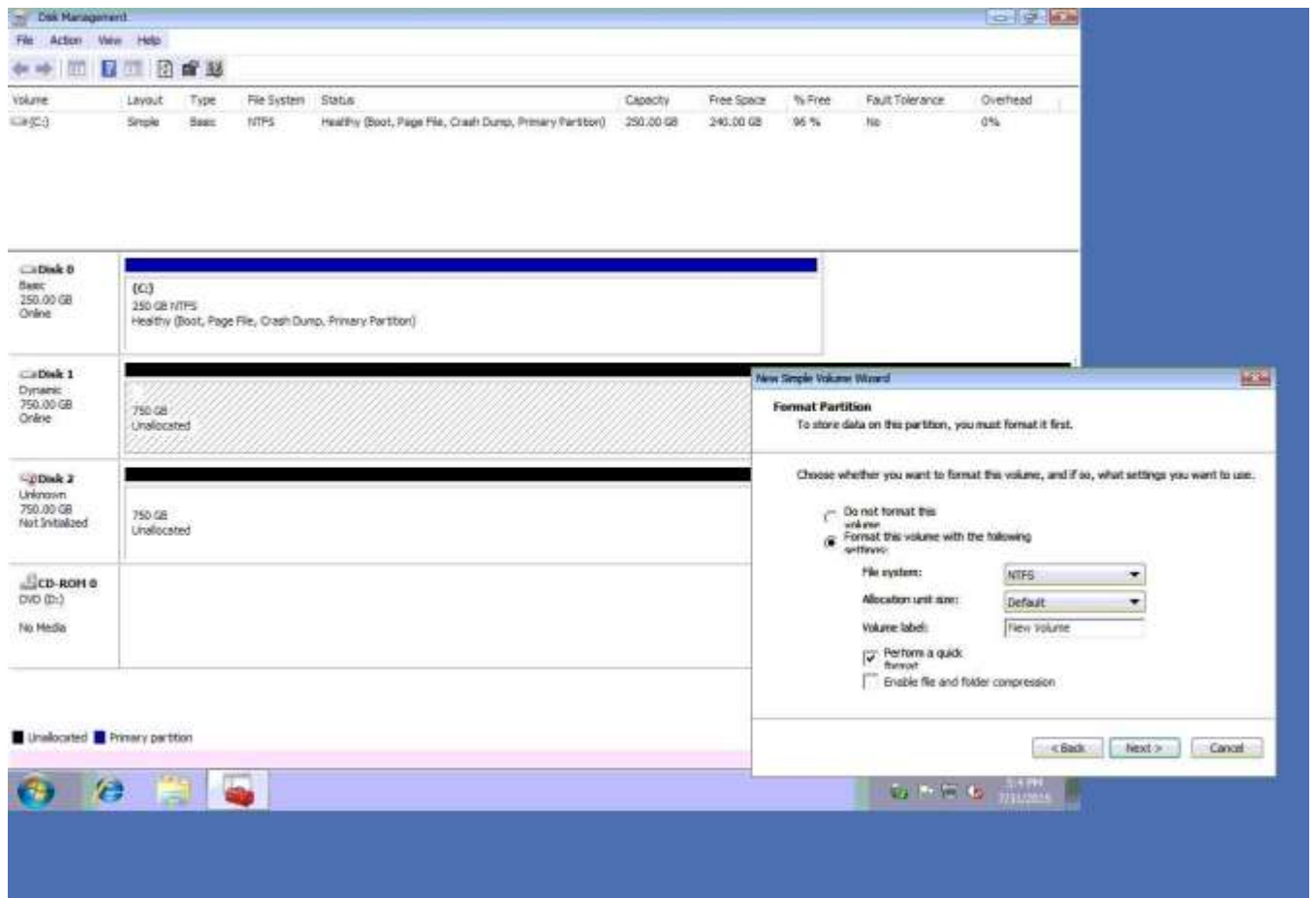
Volume	Layout	Type	File System	Status	Capacity	Free Space	% Free	Fault Tolerance	Overhead
(C:)	Simple	Basic	NTFS	Healthy (Boot, Page File, Crash Dump, Primary Partition)	250.00 GB	240.00 GB	96 %	No	0%
New Volume (F:)	Simple	Dynamic	NTFS	Healthy	250.00 GB	247.50 GB	99 %	No	0%
New Volume (G:)	Simple	Dynamic	NTFS	Healthy	500.00 GB	495.00 GB	99 %	No	0%

Below the table, the details for each disk and CD-ROM are shown:

- Disk 0:** Basic, 250.00 GB, Online. Contains a primary partition (C:) of 250 GB NTFS, which is healthy and contains the boot, page file, and crash dump.
- Disk 1:** Dynamic, 750.00 GB, Online. Contains two simple volumes: New Volume (F:) of 250.00 GB NTFS and New Volume (G:) of 500.00 GB NTFS, both healthy.
- Disk 2:** Basic, 750.00 GB, Online. Currently unallocated.
- CD-ROM 0:** DVD (D:), No Media.

A legend at the bottom indicates: Unallocated (black), Primary partition (blue), Simple volume (yellow).

The taskbar at the bottom shows the system tray with the time 5:13 PM and date 7/31/2015.



Question: 2

A technician arrives on site to find that two users who have the same model on Android smartphone are having the same issue with a specific application. Whenever they attempt to launch the application, it fails and gives an error message. Which of the following should the technician do FIRST?

- A. Reinstall the application
- B. Roll back the application to the earlier version
- C. Clear the application cache
- D. Update the OS of the smartphones

Answer: D

Question: 3

A technician is working on a Windows 10 PC that is running slowly. Which of the following commands should the technician use to correct this issue? (Select two.)

- A. dir
- B. chdsk
- C. dism

- D. ipconfig
- E. format
- F. diskpart

Answer: B, C

Question: 4

An administrator is setting up a Windows terminal server. Which of the following settings should the administrator modify to increase server security? (Select two.)

- A. Change the default access port
- B. Enforce password complexity
- C. Put the terminal server into the router's DMZ
- D. Disable logon time restrictions
- E. Block all unused ports on the LAN smart switch
- F. Use the local client certificate for server authentication

Answer: B, E

Question: 5

A company has hired a new IT firm to manage its network switches and routers.

The firm is geographically separated from the company and will need to be able to securely access the devices.

Which of the following will provide the ability to access these devices?

- A. Telnet
- B. SSH
- C. RDP
- D. VNC

Answer: B

Thank You for trying 220-1002 PDF Demo

<https://www.certsland.com/220-1002-dumps/>

Start Your 220-1002 Preparation

[Limited Time Offer] Use Coupon “certs20” for extra 20% discount on the purchase of PDF. Test your 220-1002 preparation with actual exam questions.